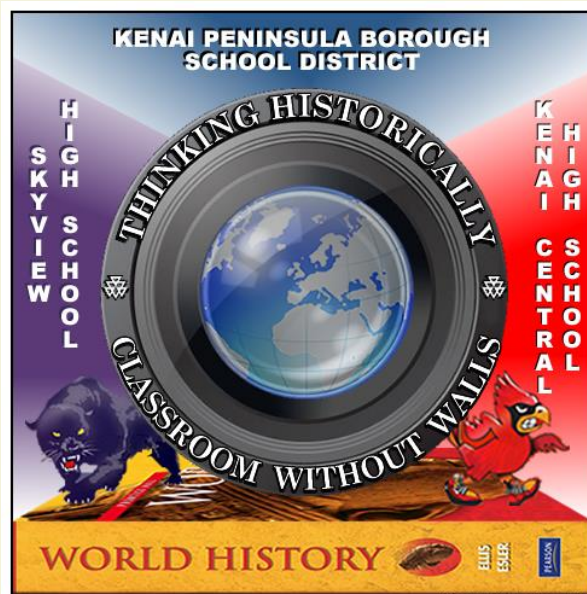


Classroom WithOut Walls

BEGINNING OF YEAR KEY TERMS



Created by Anton Weissenberg

Ethnocentric/Ethnocentrism



- The belief in the inherent superiority of one's own ethnic group or culture.
- A tendency to view alien groups or cultures from the perspective of your own.

Ethnocentrism:
"the emotional attitude that one's own race, nation, or culture is superior to all others"



Assimilate/Assimilation



- To take in and absorb as one's own
- To conform to the customs, attitudes, and behaviors of a dominant cultural group or national culture
- To make similar
- Example: going from middle school to high school



Acculturate/Acculturation



- Process of adopting the cultural traits or social patterns of another group.
- Example: moving to Alaska from Florida



Socialize/Socialization



- To make fit for life in companionship with others.
- Example: your parents teaching you manners



Culture



- A unique way of life shared by a group of people and passed from generation to generation.
- Example: living in the city versus living in the country.



Sub-culture



- A culture within a culture.
- Example: A Skyview (unique culture) student who likes skateboarding. (sub-culture)



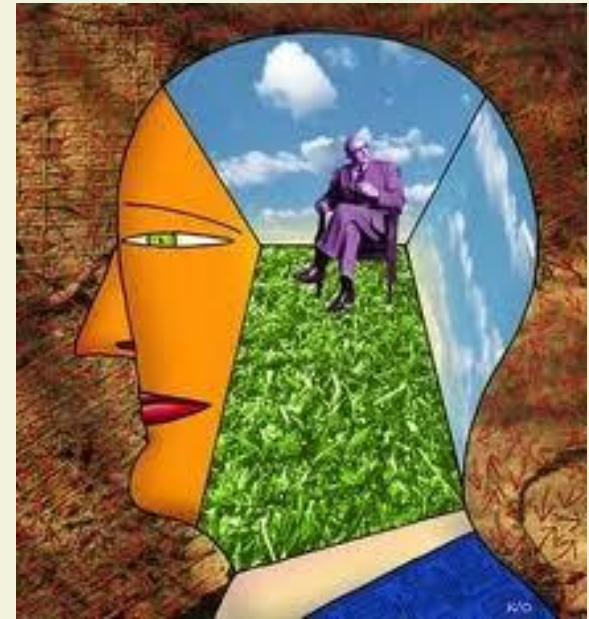
Figure 1: The Cultural Web



Consciousness



- Awareness
- The thoughts and feeling of an individual or a group of people.
- Awareness of something for what it is.
- Example: acknowledging that your behavior affects other people.

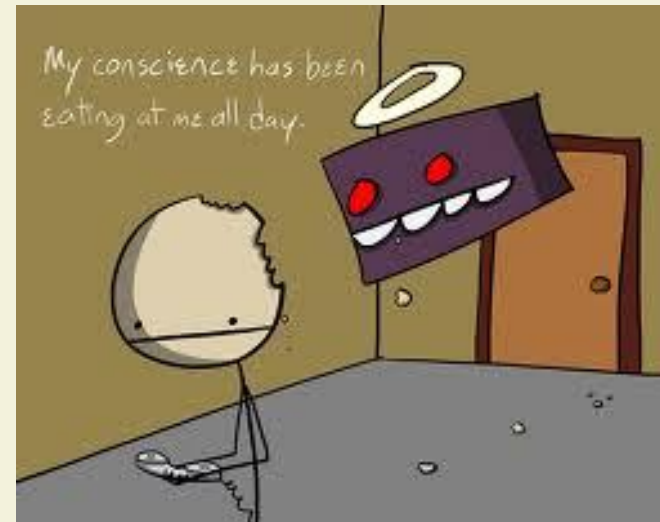




Conscience



- The inner sense of right and wrong.
- The ethical and moral principles that control our behavior and actions.
- Example: the devil on one shoulder and the angel on the other that direct your decision making.



Relevance/relevant



- Bearing upon the matter at hand.
- Having practical value or applicability.
- Example: learning geometry so you can build a square box.



Perceive/Perception/Perspective



- To become aware of, know, or identify by means of the senses.
- To recognize, discern, or understand.



Perceive/Perception/Perspective



- The act of apprehending (to grasp the meaning or understand) by means of the senses or the mind.
- One's mental view of facts, ideas, and thoughts and their interrelationships.
- Example: Political view on any given issue.



Microsoft Lync



- Go to All Programs

- Open up Microsoft Lync double click on



icon.

- Type in name of contact: Anne Beebe

- ✦ Place cursor on Icon and options will appear



Microsoft Lync



From the options you can Instant Message, Video Conference and Share Desktops.



Key Term Assignment



- Provide a personal example for each key term listed.
- Provide an example from the video CULTURES of each item.
- **1. Ethnocentric/ethnocentrism-**
- **2. Assimilate/assimilation-**
- **3. Acculturate/acculturation-**
- **4. Socialize/socialization-**
- **5. Culture-**
- **6. Sub-culture-**
- **7. Consciousness-**
- **8. Conscience-**
- **9. Relevant/relevance-**
- **10. Perceive/perception/Perspective**

Period 1 Partners



Period 2 Partners



Period 3 Partners

